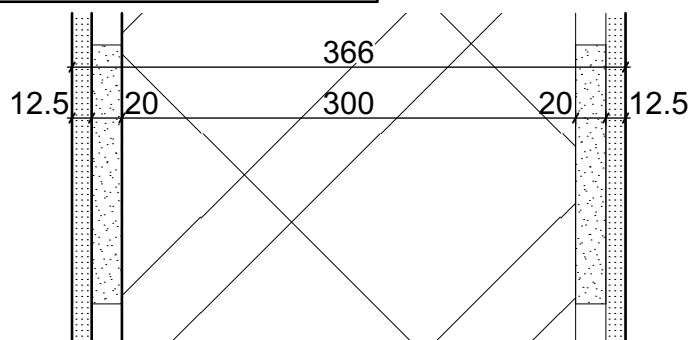


# INTERNAL WALL WA3

SC 1:5



## COMPOSITION OF INTERNAL WALL HELUZ AKU 30

N	FUNCTION	MATERIAL SPECIFICATION	STABILIZATION	THICKNESS
1	PAINT	ONE-COMPONENT, WATER-SOLUBLE PAINT DESIGNED FOR GYPSUM BOARDS internal dispersion paint with organic binders and limestone fillers, water vapour permeability 0.02 m	brush or spraying machine	-
2	FILLER	UNIVERSAL PASTE FILLER bending strength > 320N, fire reaction class A2-s1,d0	stainless steel trowel	-
3	GYPSUM BOARD	GYPSUM BOARD coefficient of thermal conductivity $\lambda_u$ 0.21W/m <sup>2</sup> *K, fire reaction class A2-s1,d0, diffusion resistance factor $\mu$ 6-10, longitudinal expansion factor in case of humidity change 5-8*10 <sup>-6</sup> , compressive strength 5.0 - 10.0 MPa	mechanically anchored	12.5
4	ADHESIVE BINDER	GYPSUM ADHESIVE BINDER adhesion min. 0.24 MPa, fire reaction class A1, drying time min. 12 hours	stainless steel trowel	20
5	PENETRATION	CONCENTRATED WATER DISPERSION concentrated aqueous dispersions of artificial resins based on acrylic resins with additives, consumption 100g/m <sup>2</sup> , dilution ratio 1:4, drying time circa 24 hours	roller, brush or spraying machine	-
6	LOAD-BEARING	LOAD-BEARING MASONRY BRICK monolayer, load-bearing, heat transfer coefficient U 1.0W/m <sup>2</sup> *K, coefficient of thermal conductivity $\lambda_u$ 0.363W/m <sup>2</sup> *K, fire reaction class A1, fire resistance REI 180 DP1, airborne noise Rw 56, diffusion resistance factor $\mu$ 5/10	-	300
7	PENETRATION	CONCENTRATED WATER DISPERSION concentrated aqueous dispersions of artificial resins based on acrylic resins with additives, consumption 100g/m <sup>2</sup> , dilution ratio 1:4, drying time circa 24 hours	roller, brush or spraying machine	-
8	ADHESIVE BINDER	GYPSUM ADHESIVE BINDER adhesion min. 0.24 MPa, fire reaction class A1, drying time min. 12 hours	stainless steel trowel	20
9	GYPSUM BOARD	GYPSUM BOARD coefficient of thermal conductivity $\lambda_u$ 0.21W/m <sup>2</sup> *K, fire reaction class A2-s1,d0, diffusion resistance factor $\mu$ 6-10, longitudinal expansion factor in case of humidity change 5-8*10 <sup>-6</sup> , compressive strength 5.0 - 10.0 MPa	mechanically anchored	12.5
10	FILLER	UNIVERSAL PASTE FILLER bending strength > 320N, fire reaction class A2-s1,d0	stainless steel trowel	-
11	PAINT	ONE-COMPONENT, WATER-SOLUBLE PAINT DESIGNED FOR GYPSUM BOARDS internal dispersion paint with organic binders and limestone fillers, water vapour permeability 0.02 m	brush or spraying machine	-